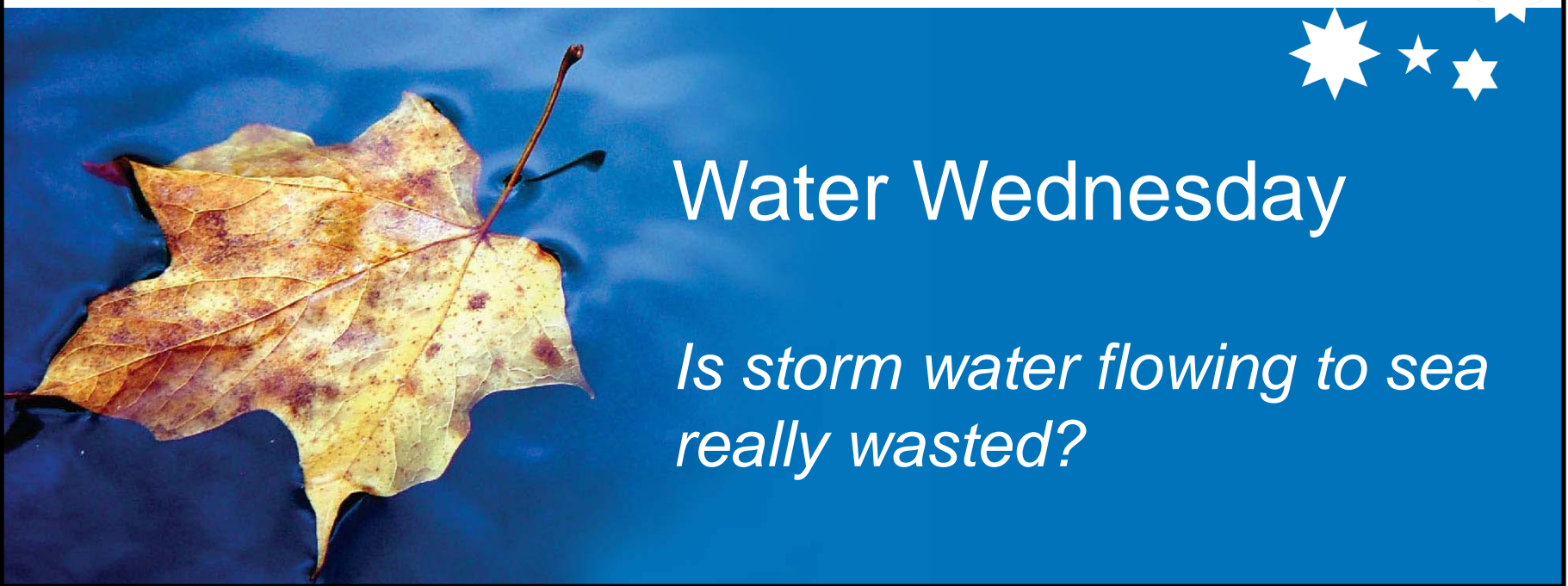


# The Environment Institute Water Research Centre



## Water Wednesday

*Is storm water flowing to sea  
really wasted?*



# IS STORMWATER FLOWING TO SEA REALLY WASTED?

What is the most effective management of stormwater?





# CONTENT

- » Definitions and Perceptions
- » Policy Framework for Effective Stormwater Management
- » Stormwater Harvesting and Groundwater
- » River Torrens – a case study
- » Conclusions



# DEFINITIONS AND PERCEPTIONS

- » Stormwater – definition - runoff from urban areas
  
- » Effective Stormwater Management –
  - hazard management (flooding)
  - urban amenity (open space)
  - environmental outcomes (impacts and opportunities)
  - water supply (site, precinct, catchment scale)
  
- » Past to present-
  - 1960 – 1980's; drainage and flood issues
  - 1990 – 2000's; water quality impacts
  - 2005 – present; an alternative water supply



# **POLICY FRAMEWORK FOR EFFECTIVE STORMWATER MANAGEMENT**

- » Stormwater Management Agreement between State and Local Governments 2006
- » Stormwater Management Plans
- » WSUD – Mandatory Requirements for new development
- » Water for Good – 60GL stormwater reuse target
- » Water Allocation Plans – Torrens, Onkaparinga and Gawler

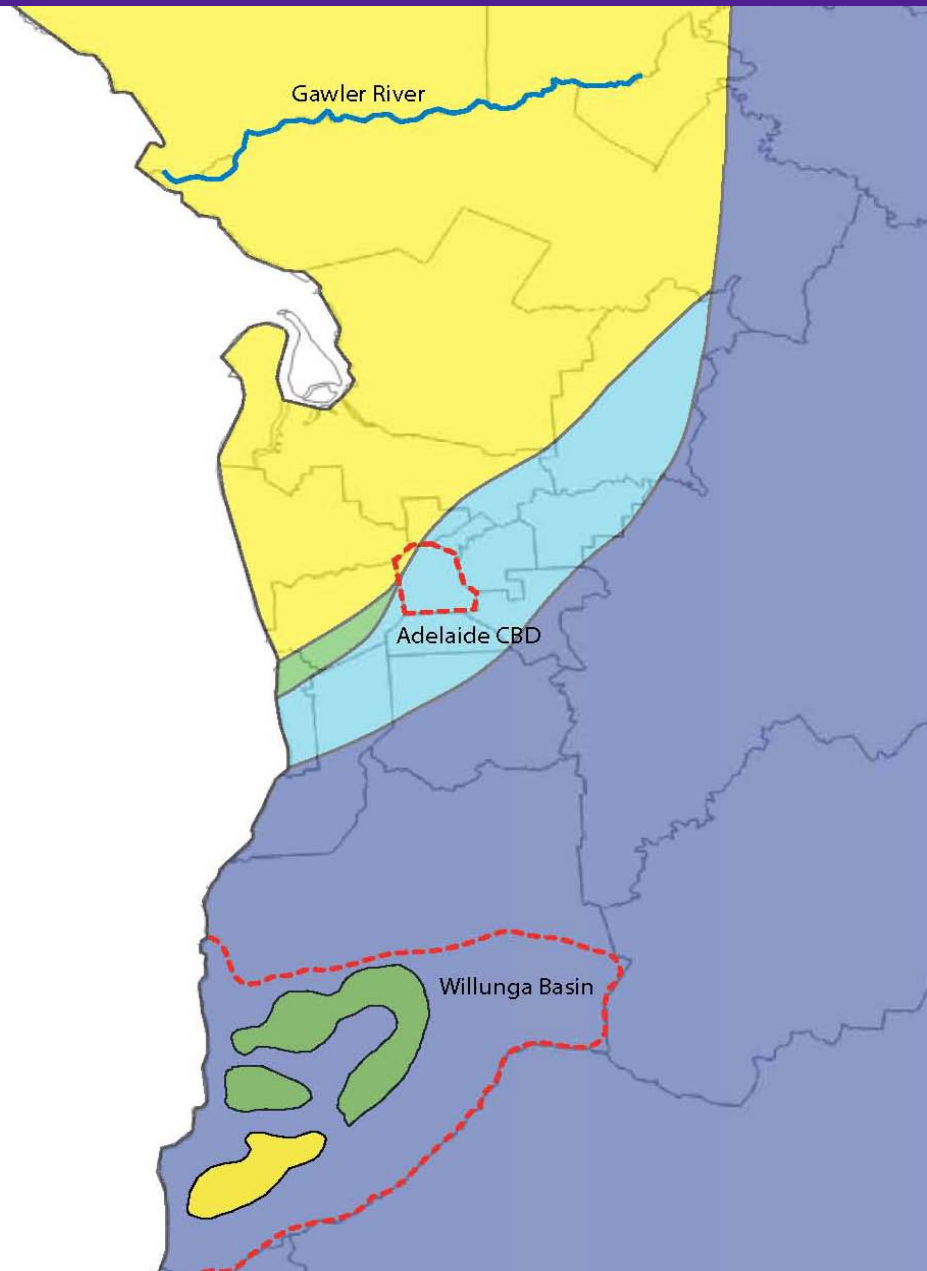


# AQUIFER STORAGE & RECOVERY

Capturing and storing stormwater

ASR Potential

-  Unlikely
-  Low
-  Moderate
-  High



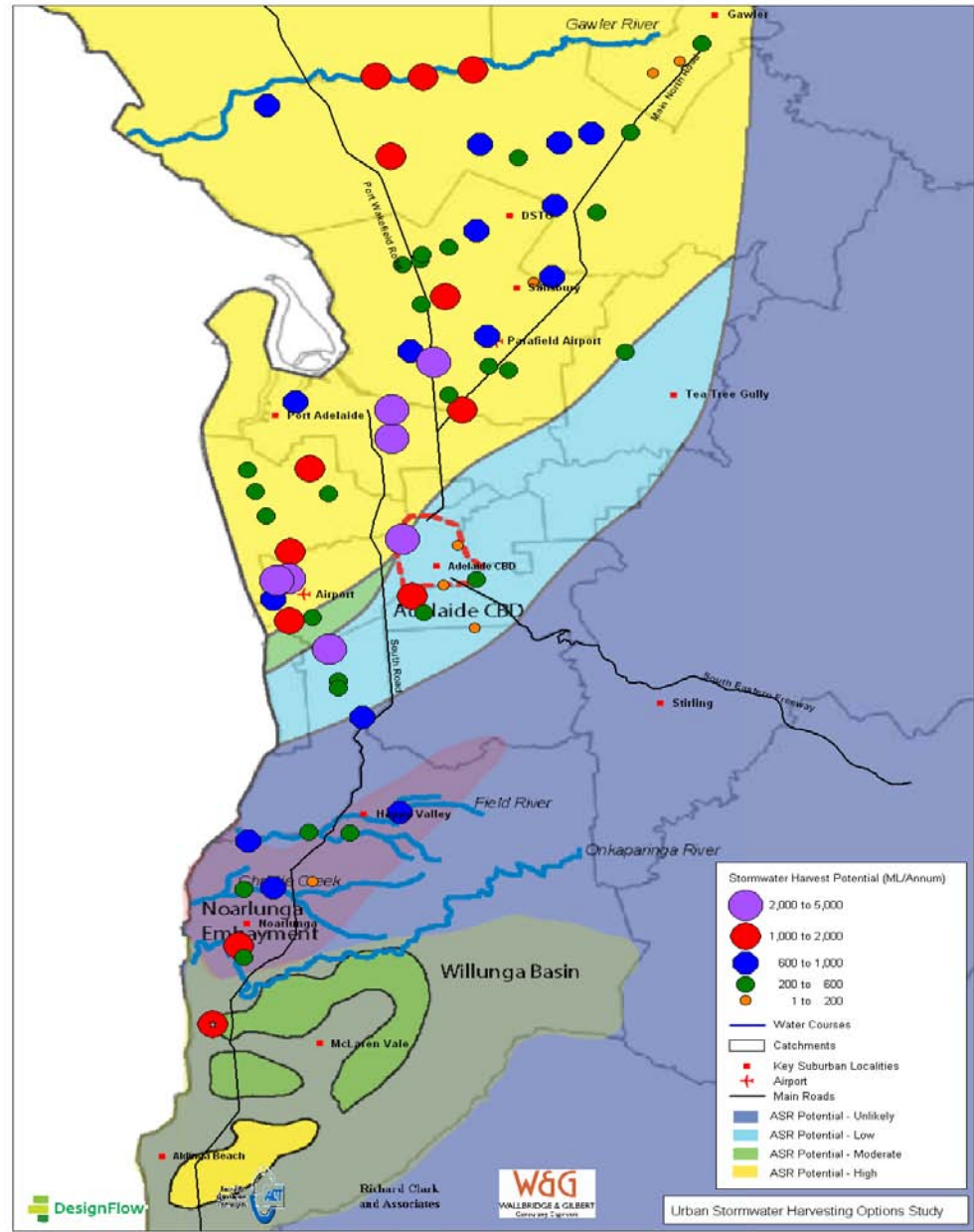


# STORMWATER HARVESTING SITES

Metro Adelaide SW approx 90GL/year

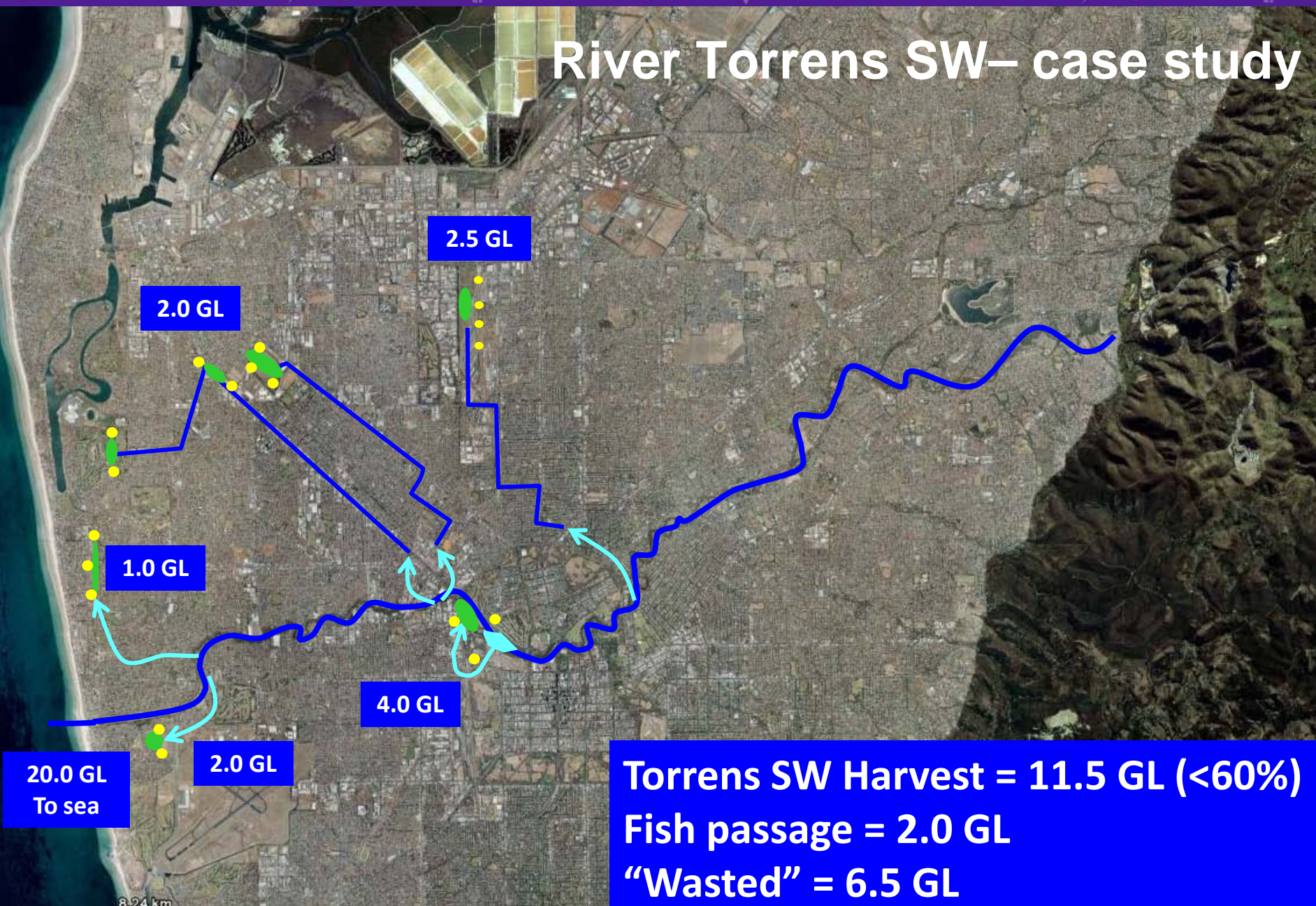
SW Projects to 2014 approx 20GL/yr

Water for Good target for SW is 60GL/yr by 2050





# River Torrens SW– case study



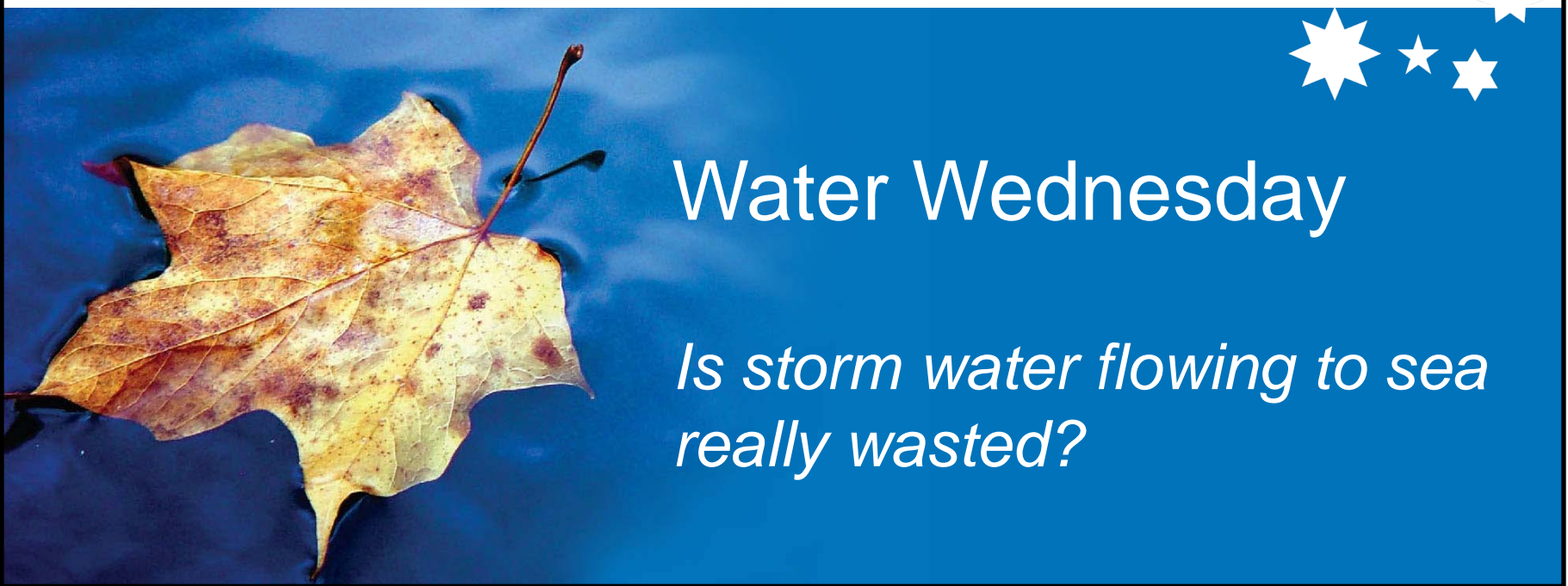
**Torrens SW Harvest = 11.5 GL (<60%)**  
**Fish passage = 2.0 GL**  
**“Wasted” = 6.5 GL**



# CONCLUSIONS

- » “Stormwater” is from urban areas, it is not rural runoff or spill from reservoirs - little environmental value
- » The drought, restrictions, WSUD, government funding and climate change is driving 20GL/yr SW reuse to 2014
- » Demand, costs, water policy and sustainability factors largely influence stormwater reuse
- » Stormwater for direct or indirect potable is off the agenda
- » Is stormwater really wasted ? – No - its really about cost and risk!

# The Environment Institute Water Research Centre



## Water Wednesday

*Is storm water flowing to sea  
really wasted?*